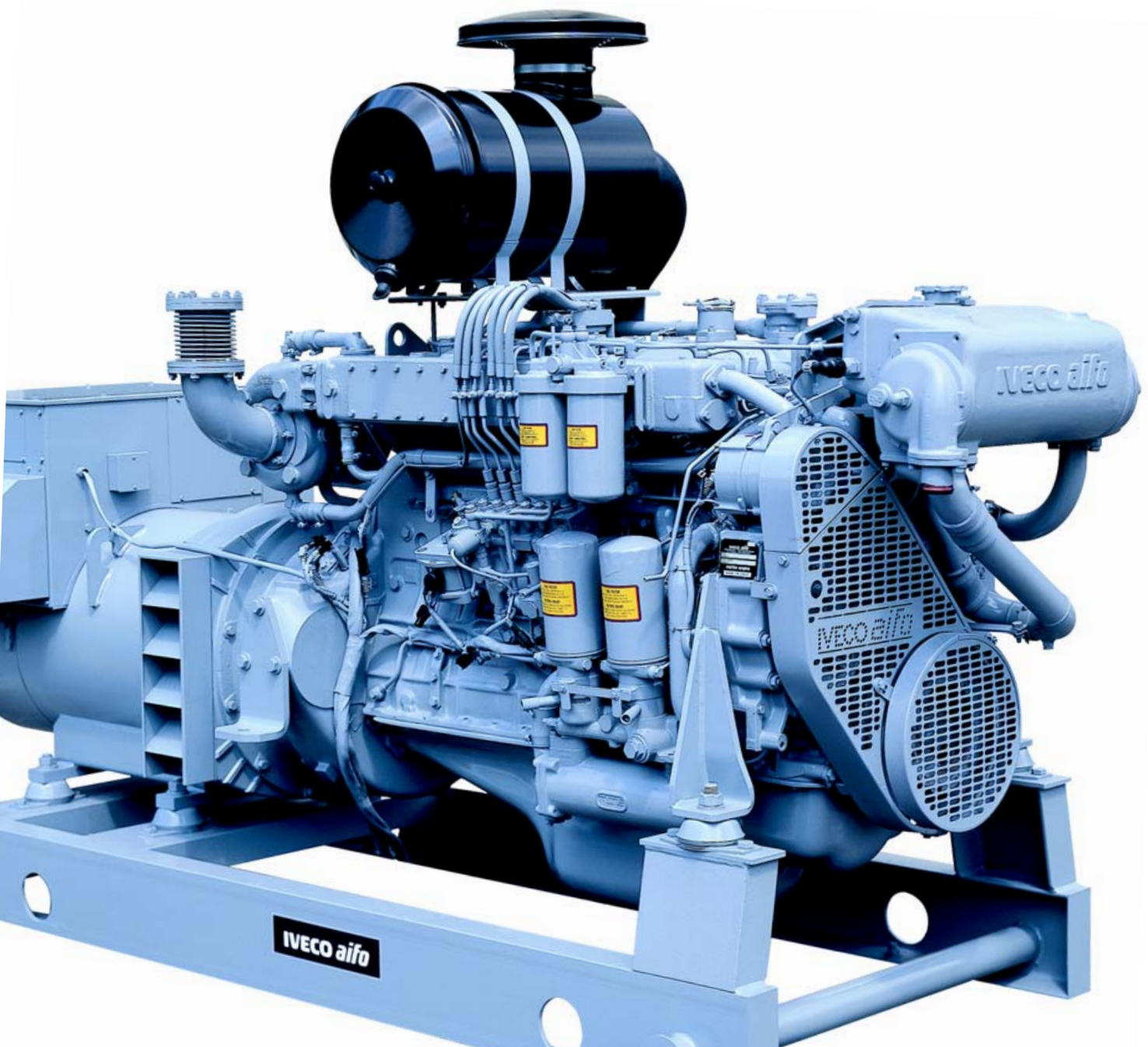




MARINE GENERATING SETS RANGE

from 30 kVA to 750 kVA



IVECO
ENGINE BUSINESS UNIT

Technological Excellence

SPECIFICATIONS

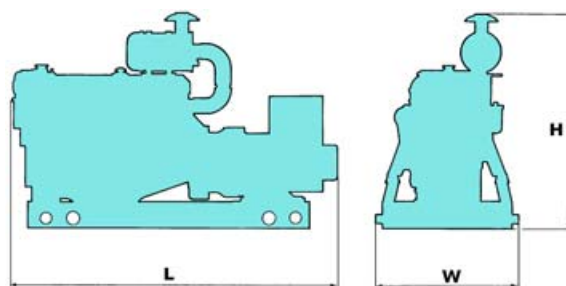
Model*	Cyl./Asp. (1)	Displ. L	Prime Power (2)		Dimensions (mm)			Weight Kg (3)
			50Hz kVA	60Hz kVA	L	W	H	
GE8035M06	3L-NA	2.9	30	35	1562	700	1205	~ 660
GE8045M08	4L-NA	3.9	40	45	1677	700	1205	~ 860
GE8065M12	6L-NA	5.9	60	70	2031	700	1225	~ 1075
GE8060SRM25	6L-TCA	5.9	85	100	2088	730	1236	~ 1580
GE8060SRM25	6L-TC	5.9	100	120	2088	730	1236	~ 1580
GE8361SM21	6L-TC	8.1	100	125	2319	862	1283	~ 1790
GE8361SRM32	6L-TCA	8.1	140	170	2309	720	1280	~ 1950
GE8210M22	6L-NA	13.8	125	150	2549	1110	1630	~ 2380
GE8210M22	6L-NA	13.8	150	180	2549	1110	1630	~ 2380
GE8210SRM36	6L-TCA	13.8	200	220	2975	1110	1937	~ 2520
GE8210SRM45	6L-TCA	13.8	300	380	2737	1150	1371	~ 2820
GE8281SRM50	V8-TCA	17.2	400	450	2380	1150	1896	~ 3525
GE8291SRM75	V12-TCA	25.8	600	700				
GE8291SRM85	V12-TCA	25.8	650	750				

*The generating sets are also available with the approval of Rina; for other certifications contact Iveco Aifo.

- (1) **L** = In line vertical model
V = 90°, V form model
NA = Naturally aspirated
TC = Turbocharged
TCA = Turbocharged aftercooled

(2) Maximum continuous duty available 24/24 hours.

(3) Dry weight with standard accessories.



IVECO aifo



Iveco Aifo and 2H Energy are companies of the Iveco Engine Business Unit.

Iveco Aifo S.p.A.
V.le Dell'Industria, 15/17
20010 Pregnana Milanese MI - Italy
Phone +39 02 935101 - Fax +39 02 93590029
Internet: <http://www.iveco.com>

Local distributor