

Free accessories supplied with the generating sets



■ **NEO** ■ **TURBO**

→ For commissioning

■ ■ Funnel



→ For operation

■ ■ Extension lead



■ ■ 12 V cable (not supplied with the NEO 1000)



■ Security cable (supplied with NEO 3000 only)



→ For storage and maintenance

■ ■ Cover



■ ■ Tool bag



■ ■ Operating and maintenance manual



Options

For the generating sets

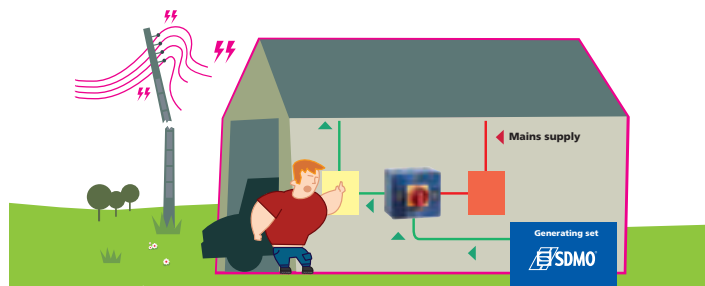
■ Can of oil - Ref. RBH0.5

Can of oil 0.5 litre (SAE 15W40).



■ Manual changeover switch - Ref. R05M

This enables you to connect a generating set to a dwelling and manually control, in total safety the source of current in the event of insufficient power or mains supply return. In the "mains" position, the dwelling is powered normally from the mains supply. In the event of a power cut, you simply start the generating set so that it supplies power to the house wiring and turn the switch to the backup power position.



For the water pumps

■ Piping kit - Ref. R11

For ST 2.36 H water pump made up of 5m suction + 25m lift.



■ Lance kit - Ref. R09

Lance kit for HP 2.26 H water pump with 2 fire hoseconnectors, 25m fire hose, 5m intake hose and fire lance (with jet, spray, and off).



■ Cover - Ref. RHO

For ST 2.36 H and HP 2.26 H water pumps. Also available for the TURBO 2500 generating set.



■ Rapid connectors - Ref. R13

Rapid connections kit for 2" water pumps.

